

# F4

## FIBER COUPLED PACKAGE

Lasertel's fiber-coupled laser diode packages deliver a wide range of optical output powers with the performance and efficiency that your applications demand.

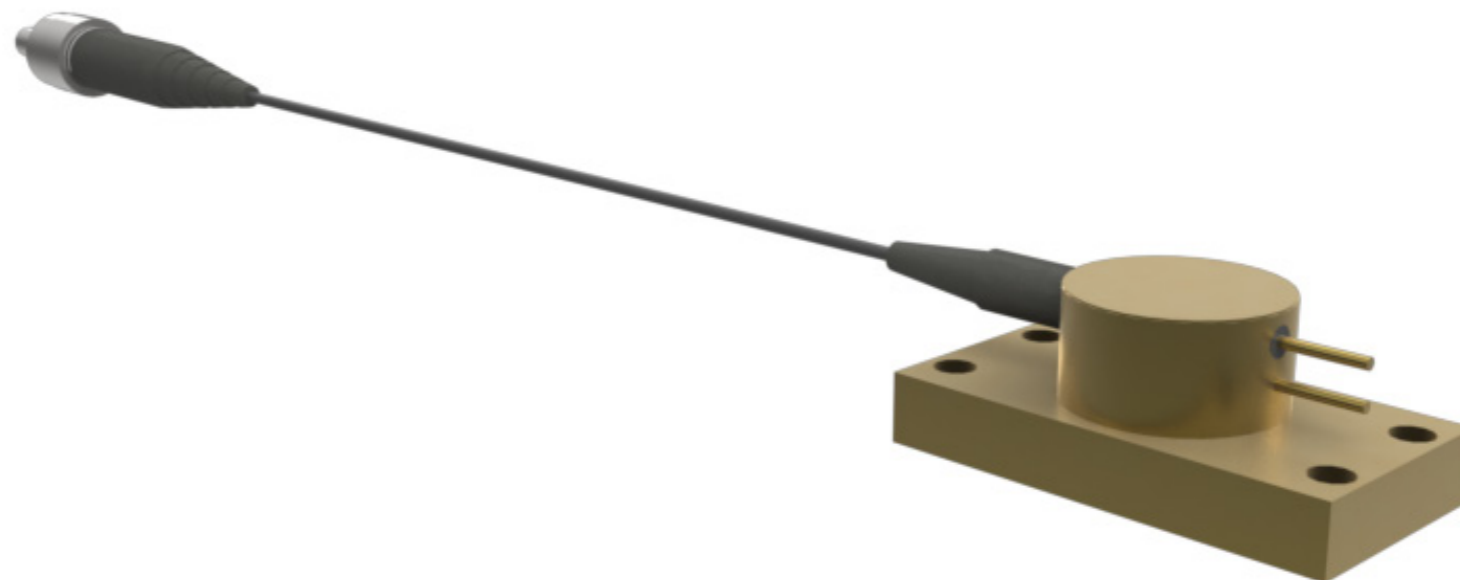
### WAVELENGTHS:

☼ 808

☼ 830

☼ 940

☼ 976



# F4 FIBER COUPLED PACKAGE

**WAVELENGTH: 808**

TYPICAL OPTICAL PARAMETERS (@25°C)	UNITS	VALUE				
Output Power	W	0.5	1	2	3	4
Operation Mode		CW	CW	CW	CW	CW
Spectral Width	nm	4	4	4	4	4
Fiber Core Diameter	µm	50	50	100	100	200
Fiber Length	m	0.5	0.5	0.5	0.5	0.5
Fiber NA	-	0.12 or 0.22	0.12 or 0.22	0.12 or 0.22	0.12 or 0.22	0.12 or 0.22
Fiber Termination	-	SMA905	SMA905	SMA905	SMA905	SMA905
TYPICAL ELECTRICAL PARAMETERS (@25°C)						
Threshold Current	A	0.18	0.3	0.55	0.85	0.85
Operating Current	A	0.9	1.8	3	5	6
Operating Voltage	V	2.2	2.2	2.2	2.2	2.2

# F4 FIBER COUPLED PACKAGE

**WAVELENGTH: 830**

TYPICAL OPTICAL PARAMETERS (@25°C)	UNITS	VALUE				
Output Power	W	0.5	1	2	3	4
Operation Mode		CW	CW	CW	CW	CW
Spectral Width	nm	4	4	4	4	4
Fiber Core Diameter	µm	50	50	100	100	200
Fiber Length	m	0.5	0.5	0.5	0.5	0.5
Fiber NA	-	0.12 or 0.22	0.12 or 0.22	0.12 or 0.22	0.12 or 0.22	0.12 or 0.22
Fiber Termination	-	SMA905	SMA905	SMA905	SMA905	SMA905
TYPICAL ELECTRICAL PARAMETERS (@25°C)						
Threshold Current	A	0.18	0.3	0.55	0.85	0.85
Operating Current	A	0.9	1.8	3	5	6
Operating Voltage	V	2.2	2.2	2.2	2.2	2.2

# F4 FIBER COUPLED PACKAGE

**WAVELENGTH: 940**

TYPICAL OPTICAL PARAMETERS (@25°C)	UNITS	VALUE				
Output Power	W	0.5	1	2	3	4
Operation Mode		CW	CW	CW	CW	CW
Spectral Width	nm	5	5	5	5	5
Fiber Core Diameter	µm	50	50	100	100	200
Fiber Length	m	0.5	0.5	0.5	0.5	0.5
Fiber NA	-	0.12 or 0.22	0.12 or 0.22	0.12 or 0.22	0.12 or 0.22	0.12 or 0.22
Fiber Termination	-	SMA905	SMA905	SMA905	SMA905	SMA905
TYPICAL ELECTRICAL PARAMETERS (@25°C)						
Threshold Current	A	0.18	0.3	0.55	0.85	0.85
Operating Current	A	1	1.9	3.2	5.2	6.4
Operating Voltage	V	2.2	2.2	2.2	2.2	2.2

# F4 FIBER COUPLED PACKAGE

**WAVELENGTH: 976**

TYPICAL OPTICAL PARAMETERS (@25°C)	UNITS	VALUE				
Output Power	W	0.5	1	2	3	4
Operation Mode		CW	CW	CW	CW	CW
Spectral Width	nm	5	5	5	5	5
Fiber Core Diameter	µm	50	50	100	100	200
Fiber Length	m	0.5	0.5	0.5	0.5	0.5
Fiber NA	-	0.12 or 0.22	0.12 or 0.22	0.12 or 0.22	0.12 or 0.22	0.12 or 0.22
Fiber Termination	-	SMA905	SMA905	SMA905	SMA905	SMA905
TYPICAL ELECTRICAL PARAMETERS (@25°C)						
Threshold Current	A	0.18	0.3	0.55	0.85	0.85
Operating Current	A	1	1.9	3.2	5.2	6.4
Operating Voltage	V	2.2	2.2	2.2	2.2	2.2

# F4 FIBER COUPLED PACKAGE

## TECHNICAL DRAWING

DIMENSIONS IN MM

