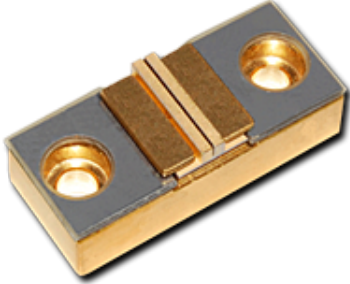


Cutting Edge Optronics, Inc.

20 Point West Blvd.

St. Charles, MO 63301

Phone: 636-916-4900 • **Fax:** 636-916-4994**Email:** st-ceolaser-info@ngc.com • **Website:** www.as.northropgrumman.com/ceolaser**G1 Package**

The G Package is a standard in the laser industry. It often serves as a building block for large laser systems, or a stand-alone unit in a laboratory environment. It is available with up to eight bars and a maximum QCW output power of 2.4 kW. CEO offers these arrays with many values of bar-to-bar pitch (400 μm , 800 μm , 1.2 mm, 1.7 mm). The G Package is also available in a CW version capable of producing 40W of continuous power.

The G Package mounts easily into laser systems or direct-diode applications. It is available in any of CEO's standard wavelengths (790-820 nm, 872-890 nm, 930-950 nm), and custom wavelengths are also available. Many configurations are available with fast-axis collimation, with divergence values less than 0.2° (FWHM).

Results 1 - 9 of 9

Item #	Wavelength	Total Power	Diode Bars	Power Per Bar	Operation
ARR179C020	806 nm \pm 3 nm	20 W	1	20 W	CW
ARR18C020	806 nm \pm 3 nm	20 W	1	20 W	CW
ARR179P100	806 nm \pm 3 nm	100 W	1	100 W	QCW
ARR179P200	806 nm \pm 3 nm	200 W	1	200 W	QCW
ARR179P400	808 nm, 880 nm, 885 nm, 940 nm	400 W	4	100 W	QCW
ARR179P500	808 nm, 880 nm, 885 nm, 940 nm	500 W	5	100 W	QCW
ARR179P800	808 nm, 880 nm, 885 nm, 940 nm	800 W	8	100 W	QCW
ARR179P1000	808 nm, 880 nm, 885 nm, 940 nm	1,000 W	5	200 W	QCW
ARR179P1600	808 nm, 880 nm, 885 nm, 940 nm	1,600 W	8	200 W	QCW

Results 1 - 9 of 9