

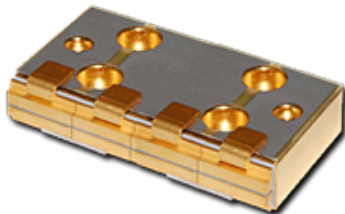
**Cutting Edge Optronics, Inc.**

20 Point West Blvd.

St. Charles, MO 63301

**Phone:** 636-916-4900 • **Fax:** 636-916-4994**Email:** st-ceolaser-info@ngc.com • **Website:** www.as.northropgrumman.com/ceolaser

## AAAA Package



The AAAA package is a compact, conductively-cooled laser diode array. The AAAA package is available in pulsed configurations with up to 9.6 kW of peak power or in CW configurations with up to 160 W of continuous power.

The AAAA package mounts easily into a laser system or direct-diode application. It is available in any of CEO's standard wavelengths (790-820 nm, 872-890 nm, 930-950 nm), and custom wavelengths are also available. Many configurations are available with fast-axis collimation, with divergence values less than 0.2° (FWHM).

Results 1 - 7 of 7

Item #	Wavelength	Total Power	Diode Bars	Power Per Bar	Operation
ARR191P800	808 nm, 880 nm, 885 nm, 940 nm	800 W	4	200 W	QCW
ARR191P1200	808 nm, 880 nm, 885 nm, 940 nm	1,200 W	12	100 W	QCW
ARR191P1600	808 nm, 880 nm, 885 nm, 940 nm	1,600 W	16	100 W	QCW
ARR191P2400	808 nm, 880 nm, 885 nm, 940 nm	2,400 W	24	100 W	QCW
ARR191P3200	808 nm, 880 nm, 885 nm, 940 nm	3,200 W	16	200 W	QCW
ARR191P4800	808 nm, 880 nm, 885 nm, 940 nm	4,800 W	24	200 W	QCW
ARR191P6400	808 nm, 880 nm, 885 nm, 940 nm	6,400 W	32	200 W	QCW

Results 1 - 7 of 7