

**LD4B** formerly **LASERS.COM**  
www.LD4B.com Coupling Light to Your Success

This product is sold and serviced in North America by:



**LASER LAB SOURCE**

a division of Research Lab Source Inc.

[LaserDiodeSource.com](http://LaserDiodeSource.com) | [LaserLabSource.com](http://LaserLabSource.com) | [LaserDiodeControl.com](http://LaserDiodeControl.com)

800.887.5065  
[contact@LaserLabSource.com](mailto:contact@LaserLabSource.com)

# LD4B-1330-DFB-10G-15

## OVERVIEW

Laser diode coupled to an optical fiber and packaged into a hermetic case.

## MAIN FEATURES

- Wavelength: 1330 nm
- Cavity type: DFB
- Optical power in CW mode in single-mode fiber: 15 mW
- Instantaneous linewidth ~1 MHz
- Data rate 10 Gbps
- Package types: coaxial, coaxial with bracket
- Built-in monitor photodiode

## ORDERING INFORMATION

### LD4B-1330-DFB-10G-15-X-X-X-X-X-X

**Case type**

**COAX:** compact coaxial (low duty cycle pulse mode only)

**COAXB:** compact coaxial with a bracket

**TH:** compact coaxial with a bracket compatible to Thorlabs mount

**Pinout code**

**12:** see more details on page 5

**Fiber type**

**SM1:** SM, G.657.A1, [Corning SMF-28 Ultra](#), furcation tubing Ø0.9 mm or **BSM1** Ø0.25mm

**SM3:** SM, G.657.B3, [Corning ClearCurve ZBL](#), furcation tubing Ø0.9 mm or **BSM3** Ø0.25mm

**SMP13:** PM, [Corning PM1300](#), PANDA type, furcation tubing Ø0.9 mm

Other type on request

**Connector type**

**FU:** FC/UPC (SM1, SM3)

**FA:** FC/APC (SM1, SM3, SMP13)

**SU:** SC/UPC (SM1)

**SA:** SC/APC (SM1)

**N:** no connector (scissors cut)

Other type: on request

**Test measurements**

**CW:** CW mode (electro-optical parameters at T=25+/-5 C and spectrum)

**Fiber length**

**0.5:** 500+/-50 mm

**1.0:** 1000+/-100 mm

Other length on request

# LD4B-1330-DFB-10G-15

---

## ABSOLUTE MAXIMUM RATINGS

Parameter		Value	Unit	Conditions
Laser diode CW forward current	I <sub>max</sub>	120	mA	CW, T = 25°C
Laser diode pulse forward current	I <sub>pmax</sub>	200	mA	10 us, duty cycle 1%
Laser diode reverse voltage	V <sub>RL</sub>	2	V	
Photodiode reverse voltage	V <sub>RP</sub>	30	V	
Photodiode forward current	I <sub>RP</sub>	5	mA	
Operating temperature*	T <sub>op</sub>	-40 - +85	°C	Coaxial package
Storage temperature	T <sub>stg</sub>	-40 - +85	°C	
Soldering temperature	T <sub>sold</sub>	260	°C	Max. 5 seconds

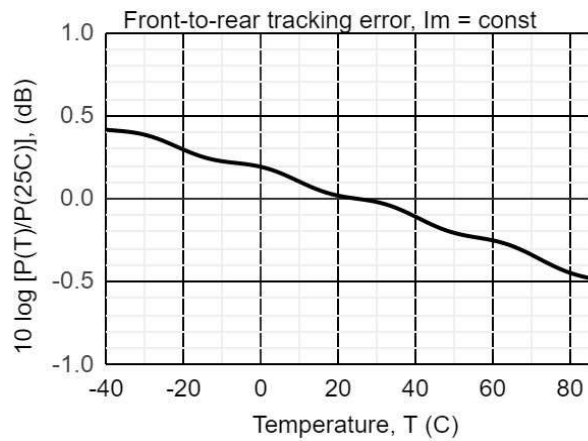
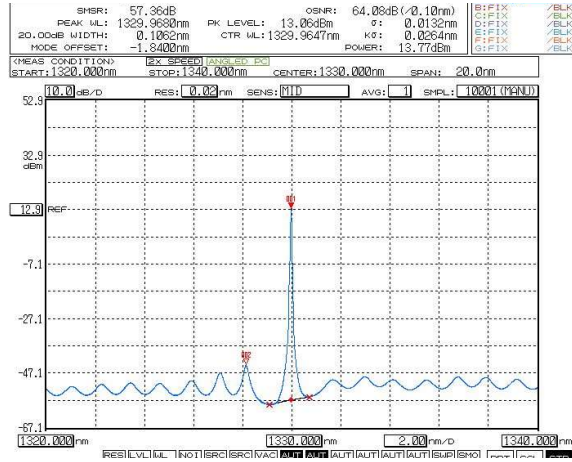
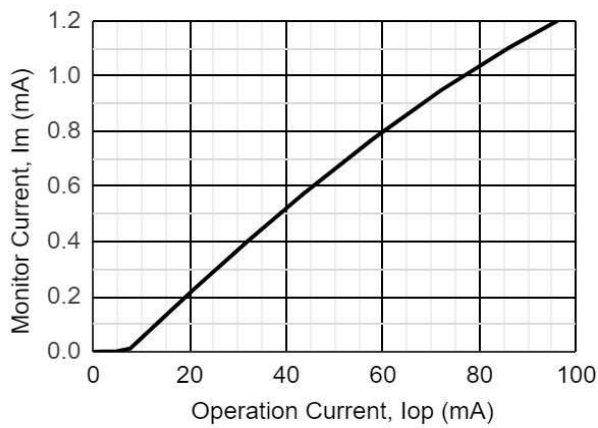
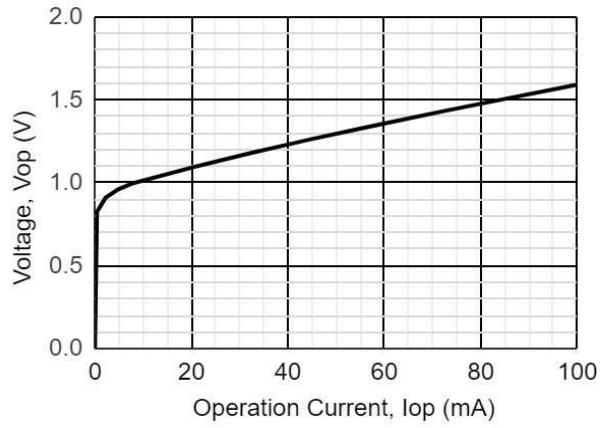
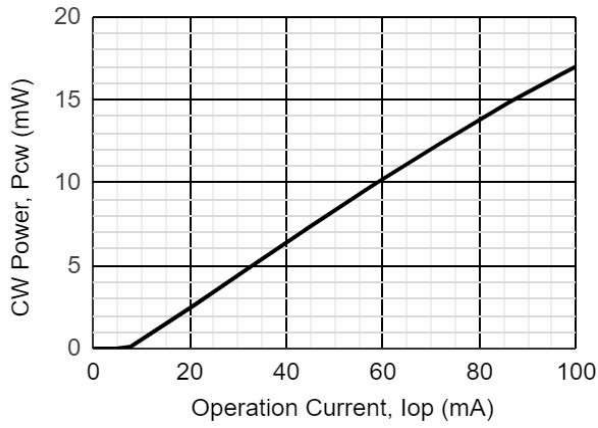
\*Operating temperature is defined by the case temperature. It is necessary to ensure sufficient heat dissipation so that the module's maximum operating temperature is not exceeded. Operation at elevated temperatures reduces the lifetime of the laser diode.

**LD4B-1330-DFB-10G-15****ELECTRICAL-OPTICAL CHARACTERISTICS (T = 25 °C)**

Parameter		MIN	TYP	MAX	Unit	Conditions
Optical power (CW)	P <sub>cw</sub>	15	20		mW	CW, I <sub>op</sub> = 100 mA, SM1
Mean wavelength	λ	1327	1330	1333	nm	CW, I <sub>op</sub> = 100 mA
Spectral width, OSA	Δλ		0.12		nm	CW, I <sub>op</sub> = 100 mA, OSA
Instantaneous linewidth	Δf		1		MHz	CW, I <sub>op</sub> = 100 mA, self-delayed heterodyne method
Wavelength-temperature coefficient	dλ/dT		0.11		nm/°C	CW, I <sub>op</sub> = 100 mA
Side-mode suppression ratio	SMSR	45	55		dB	CW, I <sub>op</sub> = 100 mA
Threshold current	I <sub>th</sub>		8	15	mA	CW
Slope efficiency	S <sub>e</sub>	0.15	0.20		mW/mA	CW, SM1
Operating voltage	V <sub>op</sub>		1.7	2.0	V	CW, I <sub>op</sub> = 100 mA
Monitor current	I <sub>m</sub>	0.3	1.0	3.0	mA	CW, I <sub>op</sub> = 100 mA, V <sub>r</sub> = 5 V
Tracking error	ER		0.5	0.8	dB	CW, I <sub>op</sub> (25C)=25 mA, I <sub>m</sub> = const
Capacitance (mPD)	C <sub>t</sub>		5.5	10	pF	V <sub>R</sub> = 5 V, f = 1 MHz
Dark current (PD)	I <sub>d</sub>			100	nA	V <sub>R</sub> = 5V
Polarization extinction ratio	PER	20			dB	CW, SMP13

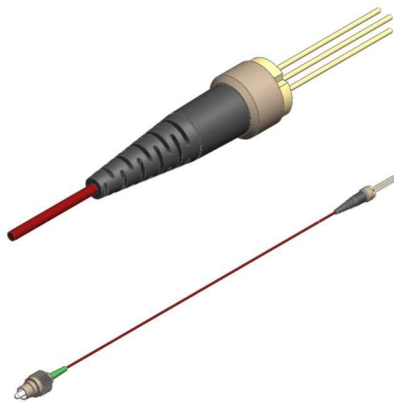
Tracking error ER = max |10 lg [P(T)/P(25C)]|, I<sub>m</sub> = const, T = T<sub>min</sub> ÷ T<sub>max</sub>

**LD4B-1330-DFB-10G-15**

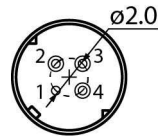


## LD4B-1330-DFB-10G-15

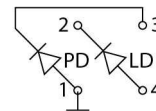
### COAX



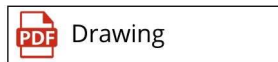
BACK VIEW



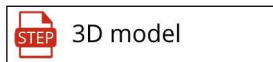
PINOUT #12



Download more information



Drawing

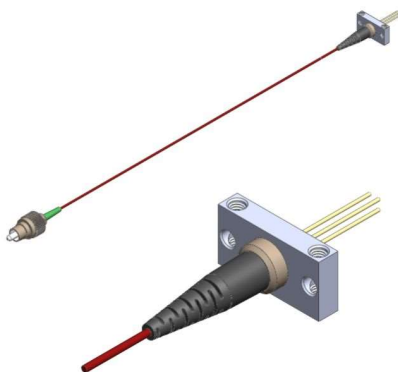


3D model

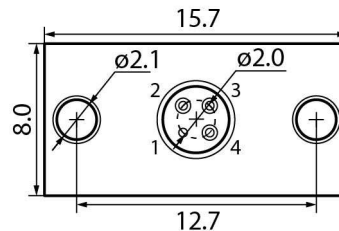


Application Notes

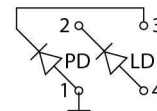
### COAXB



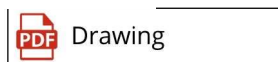
BACK VIEW



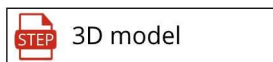
PINOUT #12



Download more information



Drawing

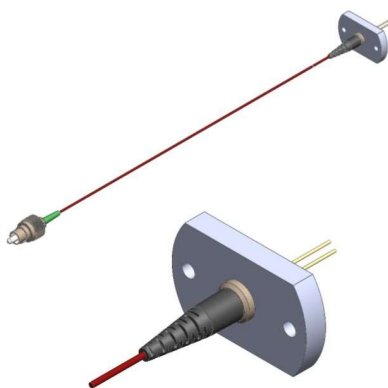


3D model

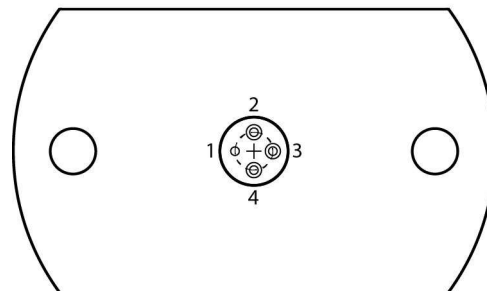


Application Notes

### PACKAGE TH

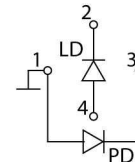


BACK VIEW



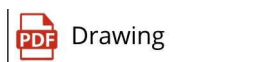
PINOUT #12

Thorlabs Pin Code G  
mPD not used

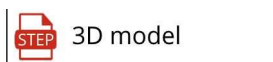


Compatible to Thorlabs  
LDM9LP mount

Download more information



Drawing



3D model



Application Notes

# LD4B-1330-DFB-10G-15

---

Characteristics, data, materials and structures specified in this datasheet are subject to change without notice. Please refer to the latest specification before use of the products.

## **Safety and handling cautions**

1. Avoid smashing and burning of the module. Avoid storing and using the module in conditions where water, organic solvents or aggressive acids or bases may contact the module or where there is a possibility of exposure to corrosive gases, explosive gases, dust, salinity or other harsh conditions. The module should be disposed as special industrial waste.
2. Exceeding absolute maximum ratings even for a short time can cause permanent damage of the module.
3. The module is sensitive to and can be broken by ESD (static electricity).

## **Conflict Minerals Policy Statement**

LD4B, UAB achieves business objectives and customer needs with social responsibility. We do not support or contribute to the violence and human rights violations associated with the mining of conflict minerals coming from Conflict Regions according to US "Dodd-Frank Act". When possible, our suppliers' conflict mineral statements are reviewed. We do not directly purchase Conflict Minerals from any source and do not knowingly procure any parts and products containing Conflict Minerals from Conflict Regions.

## **RoHS Compliance Statement**

Restriction of Hazardous Substances (RoHS) directive (Directive 2011/65/EC amended with Directive (EU) 2015/863) is the directive aimed at reducing the harmful environmental impact of waste electrical equipment by restricting the use of known dangerous substances. Based on information received from our supply sources, LD4B, UAB hereby states that the banned substances listed in the RoHS directive are not found in the parts and materials used above the threshold level listed other than exceptions approved by the European Commission.

## **REACH Compliance Statement**

Registration, Evaluation, Authorisation and Restriction of Chemicals (REACH) is a European Union regulation 1907/2006/EC that addresses the production and use of chemical substances, and their potential impacts on human health and the environment. Based on information received from our supply sources, LD4B, UAB hereby states compliance of the parts and materials used in manufacturing to REACH regulation. LD4B, UAB does not manufacture or import any substances or preparations as defined under REACH.