



200 Watt, 915nm Laser Diode - High Power Fiber Coupled Module

- 200 Watts CW Output Power
- 915nm Center Wavelength
- 105/125 0.22NA Fiber, 95% power in 0.17NA
- High Reliability Multi-Single Emitter Design

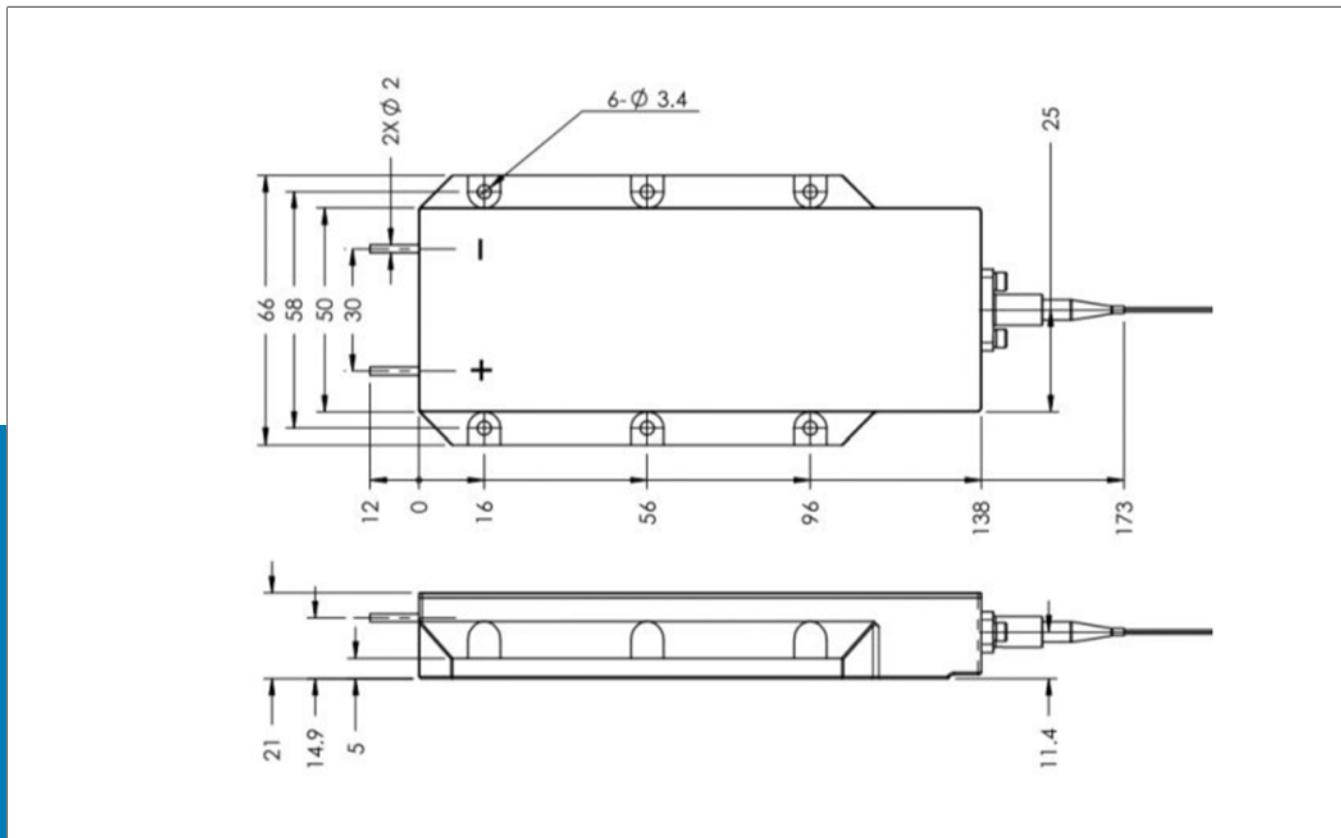
200W-915NM-1X DATA SHEET

**WORLD LEADING PRODUCTS
FOR LASER SCIENTISTS AND ENGINEERS**



200W-915NM-1X Product Overview:

These high power laser diodes offer up to 200 Watts of CW optical output power into a 105 micrometer fiber pigtail. These devices are based on a high reliability multi-single emitter design. Their multi-single emitter based design delivers very good heat dissipation through the package which leads to excellent thermal performance over a long life-time. Several key features include 1040nm to 1200nm feedback protection with feedback isolation > 30 dB across the range. Advanced processes for coupling efficiency allows these modules to deliver up to 95% of their output power within 0.17 NA. They ship with 2 meter (typ) unterminated fiber pigtail. A Peliter and Fan cooled customized heat sink is available for this laser. Also, pre-configured current source and temperature controller modules are available to connect to the heat sink unit.





OPTICAL PARAMETERS

Output Power:	200 Watts
Center Wavelength:	915nm
Spectral Width(FWHM):	6nm
95% Power in NA:	0.17NA
Slope Efficiency:	18W/A
Back Reflection Isolation Range:	1040-1200nm
Back Reflection Isolation:	30dB

FIBER PARAMETERS

Fiber Core Diameter:	105um
Fiber Clad Diameter:	125um
Numerical Aperture:	0.22NA
Fiber Length:	1.5-2m
Loose Tubing Diameter:	900um
Loose Tubing length:	1.2-1.5m
Fiber Connector:	Bare fiber
Fiber Bend Radius:	30mm

ELECTRICAL PARAMETERS

Conversion Efficiency:	48%
Typical Threshold Current:	0.8A
Typical Operating Current:	12A
Maximum Operation Voltage:	35V

THERMAL PARAMETERS

Operating Temperature Range:	15°C-35°C
Storage Temperature Range:	-30°C-70°C
Wavelength Temperature Coefficient:	0.35nm/°C
Lead Soldering Temperature:	300°C
Lead Soldering Time:	10s



Product Warranty:

In addition to the standard full one year warranty, this product is offered with an additional 3 months of extended warranty for a total of 15 months of warranty coverage. The warranty includes all parts and labor. The warranty does not include customer induced product damage.

Our Customer Commitment:



You Get Direct, Fast Tech-Support from a Product ENGINEER ... Not a Sales Person

You get DIRECT access to the correct factory engineer for your product. We eliminate the sales person "middle-man" back and forth time delays resolving technical issues. No more "Contact Us" forms. Every product has an assigned engineer in our auto-messaging data base to give you direct, immediate access to the correct tech-support info.



You Get an Extended Warranty

All products from Laser Lab Source come with a 12 month factory warranty. Additionally, we offer and extra 3 months of warranty on top of the standard warranty. *Warranty does not include customer induced product damage.*



You Get the Lowest Factory-Direct Prices Worldwide

All of our 3rd party global suppliers set & quote their own direct pricing. There are NO Mark-Up's. You get their lowest direct price.