

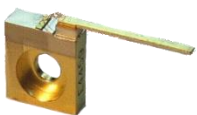
# LDX Optronics Inc.

## 730nm-885nm Laser Diodes – Free Space

| Part Number  | Wavelength (nm) | Output Power (mW) | Emitter Size (um) | Operating Temp (°C) | Threshold Current (mA) Typ. | Operating Current (mA) Typ. | Operating Voltage (V) Typ. | Beam Divergence (FWHM) |                      | Spectral Width (FWHM) | Polarization |
|--------------|-----------------|-------------------|-------------------|---------------------|-----------------------------|-----------------------------|----------------------------|------------------------|----------------------|-----------------------|--------------|
|              |                 |                   |                   |                     |                             |                             |                            | $\theta_{  }$ (°)      | $\theta_{\perp}$ (°) |                       |              |
| LDX-3215-735 | 735 ±5 nm       | 2,000             | 150               | 20                  | 600                         | 2300                        | 1.9                        | 6                      | 26                   | 1                     | TM           |
| LDX-3430-735 | 735 ±5 nm       | 4,000             | 300               | 20                  | 1800                        | 5200                        | 1.9                        | 6                      | 26                   | 1                     | TM           |
| LDX-3110-750 | 750 ±5 nm       | 1,500             | 100               | 20                  | 400                         | 1600                        | 1.9                        | 6                      | 26                   | 1                     | TM           |
| LDX-3315-750 | 750 ±5 nm       | 3,000             | 150               | 25                  | 500                         | 3300                        | 1.9                        | 6                      | 26                   | 1.5                   | TM           |
| LDX-3530-750 | 750 ±5 nm       | 5,000             | 300               | 20                  | 1800                        | 5600                        | 1.9                        | 6                      | 26                   | 1.5                   | TM           |
| LDX-3315-760 | 760 ±5 nm       | 3,000             | 150               | 20                  | 800                         | 3200                        | 1.9                        | 6                      | 26                   | 1                     | TM           |
| LDX-3630-760 | 760 ±5 nm       | 6,000             | 300               | 20                  | 2000                        | 6200                        | 1.9                        | 6                      | 26                   | 1                     | TM           |
| LDX-3105-780 | 780 ±5 nm       | 1,200             | 50                | 20                  | 300                         | 1250                        | 1.9                        | 7                      | 26                   | 1                     | TM           |
| LDX-3210-780 | 780 ±5 nm       | 2,000             | 100               | 20                  | 400                         | 2025                        | 1.9                        | 7                      | 26                   | 1                     | TM           |
| LDX-3315-780 | 780 ±5 nm       | 3,000             | 150               | 20                  | 800                         | 2800                        | 1.9                        | 7                      | 26                   | 1                     | TM           |
| LDX-3315-795 | 795 ±5 nm       | 3,000             | 150               | 25                  | 500                         | 2900                        | 1.9                        | 7                      | 26                   | 1.5                   | TM           |
| LDX-3105-808 | 808 ±3 nm       | 1,200             | 50                | 20                  | 300                         | 1350                        | 1.9                        | 7                      | 36                   | 1                     | TE           |
| LDX-3210-808 | 808 ±3 nm       | 2,000             | 100               | 20                  | 300                         | 2000                        | 1.9                        | 7                      | 36                   | 1.5                   | TE           |
| LDX-3310-808 | 808 ±3 nm       | 3,000             | 100               | 20                  | 400                         | 3000                        | 1.9                        | 7                      | 36                   | 1.5                   | TE           |
| LDX-3415-808 | 806 ±3 nm       | 4,000             | 150               | 20                  | 370                         | 3700                        | 2.0                        | 7                      | 36                   | 2                     | TE           |
| LDX-3620-808 | 808 ±3 nm       | 6,000             | 200               | 20                  | 1200                        | 8500                        | 1.8                        | 7                      | 27                   | 2                     | TE           |
| LDX-3740-808 | 808 ±3 nm       | 7,000             | 400               | 20                  | 950                         | 7100                        | 2.0                        | 7                      | 36                   | 1.5                   | TE           |
| LDX-3820-808 | 805 ±3 nm       | 8,000             | 200               | 20                  | 1200                        | 8500                        | 1.8                        | 7                      | 27                   | 2                     | TM           |
| LDX-3A20-808 | 808 ±5 nm       | 10,000            | 200               | 25                  | 1400                        | 10000                       | 1.8                        | 7                      | 27                   | 1.3                   | TM           |
| LDX-3110-830 | 830 ±5 nm       | 1,600             | 100               | 20                  | 250                         | 1600                        | 1.9                        | 7                      | 40                   | 2                     | TE           |
| LDX-3105-860 | 860 ±10 nm      | 1,000             | 50                | 20                  | 150                         | 1000                        | 1.9                        | 7                      | 44                   | 2                     | TE           |
| LDX-3110-860 | 860 ±10 nm      | 1,600             | 100               | 20                  | 200                         | 1500                        | 1.9                        | 7                      | 40                   | 2                     | TE           |
| LDX-3310-860 | 860 ±10 nm      | 3,000             | 100               | 25                  | 400                         | 2800                        | 1.9                        | 7                      | 40                   | 2                     | TE           |
| LDX-3215-860 | 860 ±10 nm      | 2,500             | 150               | 20                  | 350                         | 2500                        | 1.9                        | 7                      | 44                   | 2                     | TE           |
| LDX-3320-860 | 860 ±10 nm      | 3,300             | 200               | 20                  | 450                         | 3300                        | 1.9                        | 7                      | 44                   | 2                     | TE           |
| LDX-3425-860 | 860 ±10 nm      | 4,200             | 250               | 20                  | 550                         | 4200                        | 1.9                        | 7                      | 44                   | 2                     | TE           |
| LDX-3530-860 | 860 ±10 nm      | 5,000             | 300               | 20                  | 650                         | 5000                        | 1.9                        | 7                      | 44                   | 2                     | TE           |
| LDX-3535-860 | 860 ±10 nm      | 5,800             | 350               | 20                  | 750                         | 5800                        | 1.9                        | 7                      | 44                   | 2                     | TE           |
| LDX-3640-860 | 860 ±10 nm      | 6,600             | 400               | 20                  | 850                         | 6600                        | 1.9                        | 7                      | 44                   | 2                     | TE           |
| LDX-3210-885 | 885 ±10 nm      | 2,500             | 100               | 20                  | 200                         | 2100                        | 2.0                        | 7                      | 44                   | 2                     | TE           |
| LDX-3515-885 | 885 ±10 nm      | 5,000             | 150               | 20                  | 350                         | 4600                        | 2                          | 7                      | 44                   | 2                     | TE           |

Standard Free Space Package Options:

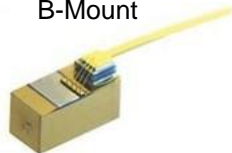
C-mount



9.0mm



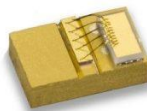
B-Mount



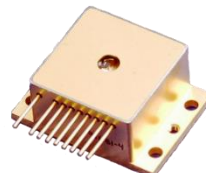
TO-3 Package



Q-mount



HHL Package



Chip on Substrate (COS)



For Additional Information Contact:



203 Joseph St. O'Fallon, Mo 63366

Phone: (636) 272-7227; fax (636) 272-3909

[diodes@rpmclasers.com](mailto:diodes@rpmclasers.com) [www.rpmclasers.com](http://www.rpmclasers.com)

Revised:  
5/24/2018

