



1535nm, 300 μ J Turn-Key Pulsed Laser System



1535nm-300 μ J PULSED LASER SYSTEM

- o 1535nm High Energy Pulsed Output
- o Pulse Width Down to 4 ns
- o Compact, Easy to Use Turn-Key System
- o Passively Q-Switched, Er:Glass Structure
- o Eye-Safe for Development of Rangefinders, LIDAR, Obstacle Avoidance Radar, Meteorological Radar
- o Standard Pulse Energy 300 μ J; Inquire for Details on Other Output Energy Levels
- o USB and UART Interface
- o Other Models Available: 100 μ J, 200 μ J, 500 μ J



1535nm-300uJ Pulsed Laser System Performance Specifications

1535NM-300UJ PULSED LASER SYSTEM SPECIFICATIONS

- Output Wavelength: 1535nm
- Pulse Energy: 300μJ
- Repetition Rate: 10 Hz
- Pulse Width: < 4 ns
- Power Stability: 3% (8 hrs)
- Full Beam Divergence, Horizontal: < 10 mrad @ 1 / e²
- Full Beam Divergence, Vertical: < 10 mrad @ 1 / e²
- Beam Profile: TEM₀₀

1535NM-500UJ PULSED LASER SYSTEM SPECIFICATIONS

- Pulse Energy: 500μJ
- Repetition Rate: 10 Hz
- Pulse Width: < 6 ns
- Power Stability: 3% (8 hrs)
- Full Beam Divergence, Horizontal: < 8 mrad @ 1 / e²
- Full Beam Divergence, Vertical: < 8 mrad @ 1 / e²
- Beam Profile: TEM₀₀

1535NM-200UJ PULSED LASER SYSTEM SPECIFICATIONS

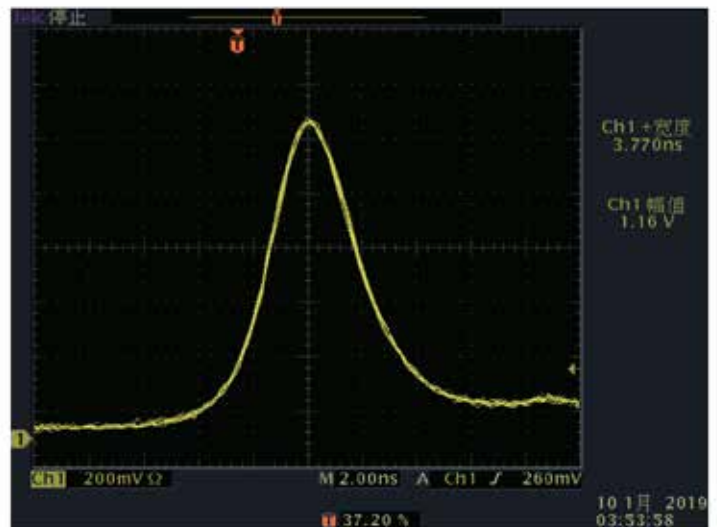
- Pulse Energy: 200μJ
- Repetition Rate: 10 Hz
- Pulse Width: < 4 ns
- Power Stability: 3% (8 hrs)
- Full Beam Divergence, Horizontal: < 10 mrad @ 1 / e²
- Full Beam Divergence, Vertical: < 10 mrad @ 1 / e²
- Beam Profile: TEM₀₀

1535NM-100UJ PULSED LASER SYSTEM SPECIFICATIONS

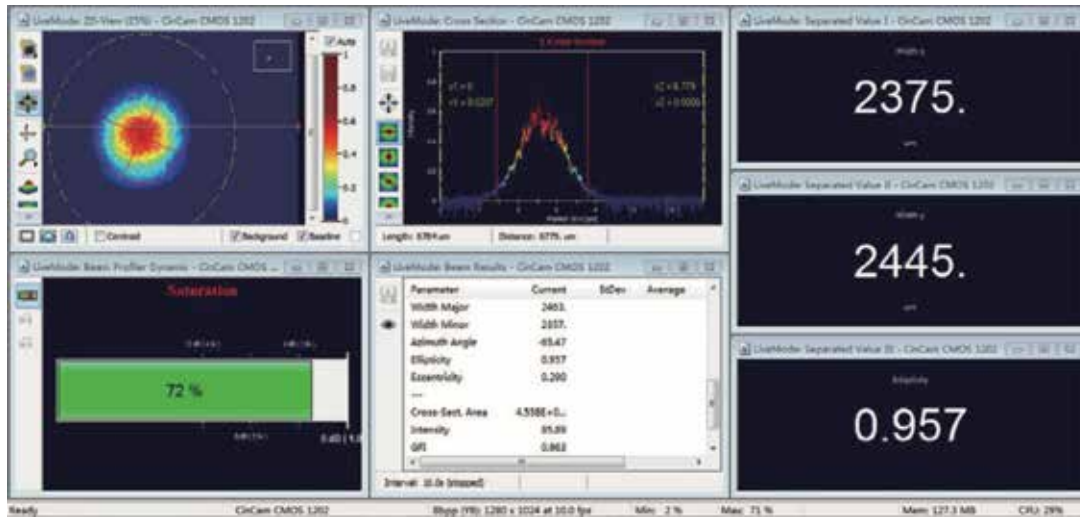
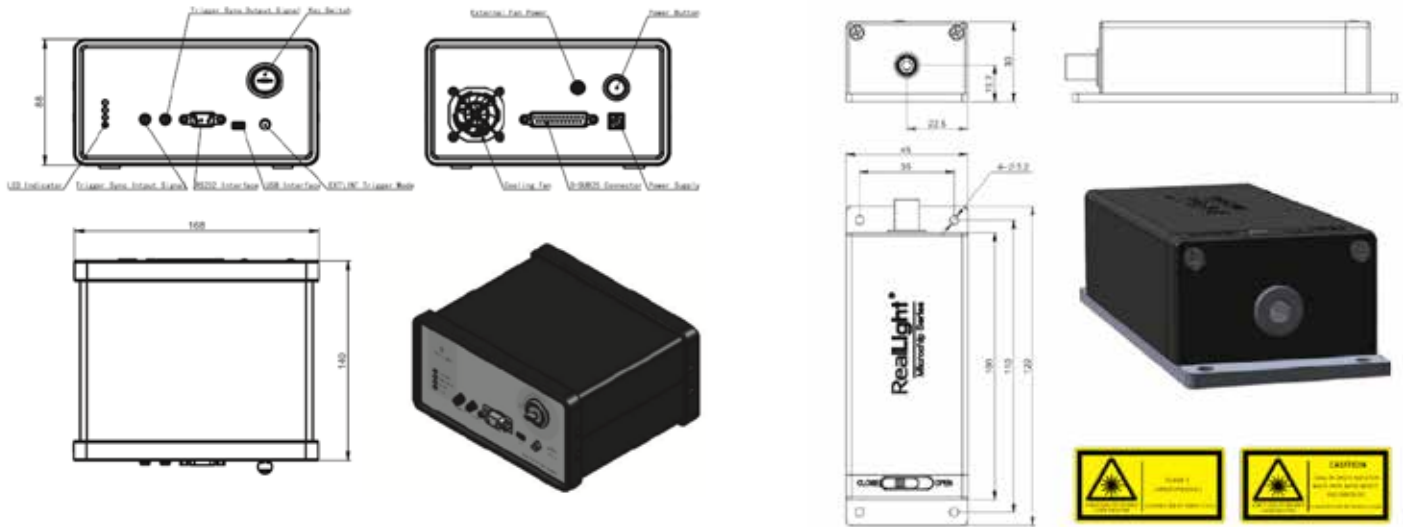
- Pulse Energy: 100μJ
- Repetition Rate: 10 Hz
- Pulse Width: < 4 ns
- Power Stability: 3% (8 hrs)
- Full Beam Divergence, Horizontal: < 12 mrad @ 1 / e²
- Full Beam Divergence, Vertical: < 12 mrad @ 1 / e²
- Beam Profile: TEM₀₀

SYSTEM SPECIFICATIONS

- Power Supply Voltage: 100-240 VAC, 50/60 Hz
- Modulation Input: TTL (0 – 5V) SMA input
- Control Interface: RS232, USV
- Power Consumption: < 3 W
- Power Supply Dimensions (W × H × L, mm): 168 × 88 × 140
- Laser head dimensions (W × H × L, mm): 45 × 30 × 120
- Operating Temperature: 15°C – 35°C
- Storage Temperature: 0°C – 60°C



1535nm-300uJ Pulsed Laser System Performance Specifications





Offered by
LASER LAB SOURCE



**LASER
DIODE
SOURCES**

PRODUCT SALES AND SERVICE:

Unlimited phone and email support is provided for products purchased through Laser Lab Source. Orders for this product are fulfilled by Laser Lab Source in North America and select international regions. It is manufactured by RealLight Laser, Beijing, China.

PRODUCT WARRANTY:

This product is sold with a full one-year warranty. It is warranted to be free from defects in material and/or workmanship for a period of one year from the date of shipment. The warranty does not cover damage to the to the product due to mishandling or use of the product outside of its specified maximum ratings.



Laser Lab Source, Inc
1820 W. Lincoln Street
Bozeman, MT 59715
contact@LaserDiodeSource.com
contact@LaserDiodeControl.com
800-877-5065



Beijing RealLight Laser Technology Co., Ltd.