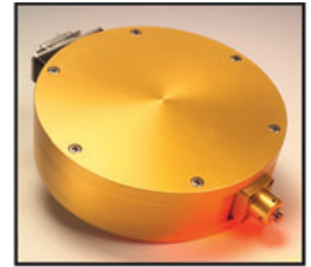


VISIBLE LASER MODULES

Power Pack 630

**Visible CW Laser Modules for
Medical and Display Applications**



The Power Pack 630 is uniquely designed to provide high power and brightness at wavelengths below 633 nm while operating at moderately low current levels.

Designed for maximum flexibility, the Power Pack is configured as a stand-alone module that easily interfaces with commercially available current drivers and smoothly integrates into OEM systems.

Up to 2.4 W of optical power is available in the red wavelength band of 630 - 633 nm. Emission is from industry standard SMA or FC connectors compatible with a 600 μ m, 0.22 NA fiber.

The module can be attached directly to a cooling plate or optionally cooled through a forced air heat sink and cooling fan. Internal laser temperature control is via an integral TEC and Thermistor.

Each module includes a visible aiming beam for accurate alignment of the laser output to the target. A standard 15 pin D-connector is used to provide the electrical input interface.

The Power Pack 630 is compatible with the absorption band of photosensitive drugs used in photodynamic therapy, and other applications including imaging, illumination, entertainment, and RGB display.

Typical Specifications @ 10°C

Power Pack 630	Specifications	Notes
Optical Output	2.4 W min.	Output port
Fiber Compatibility	600 μ m diameter, 0.22 NA	SMA or FC Connector
Wavelength	90% of power in 630-633 nm	
Electrical Input	30 V x 0.7 A typical	15-pin D-Sub Connector
Operating Conditions	40°C	Max ambient temperature
TE Cooler Capacity	V _{max} = 7 V; I _{max} = 5.8 A	40 W max
External Cooling	Aluminum heat sink with fan	Forced air, optional
Hermeticity	10E-8 atm cc/sec	Max helium leak rate
Aiming Beam	Internal	
Warranty	1 year or 1000 hours	
Package Size	6 inch dia. x 1.8 inch height	152 mm dia. x 46 mm height

Safety

Intense-HPD Gallium Arsenide phosphide lasers emit radiation which is visible to the human eye. Safety precautions must be taken to prevent potential eye damage. Do not view or stare at operating lenses. If viewing is required, use a matte surface or suitable viewing screen. Laser safety goggles or glasses are recommended when operating the lasers.

Disclaimer

Intense-HPD reserves the right to make changes at any time as necessary to improve the design and to supply the best product. The information provided is believed to be accurate at the time of printing. No responsibility is assumed for its use or on the infringements on the rights of others.
© Intense Ltd. All rights reserved worldwide.

1200A Airport Road
North Brunswick, NJ 08902
USA
Tel: +1 732 249 2228
Fax: +1 732 249 8139

E-mail: sales @intenseco.com
Web: www.intenseco.com

4 Stanley Boulevard,
Hamilton International
Technology Park,
Blantyre, Glasgow, G72 0BN
Scotland
Tel: +44 (0) 1698 827000
Fax: +44 (0) 1698 827262