



FAP 400-HT Series

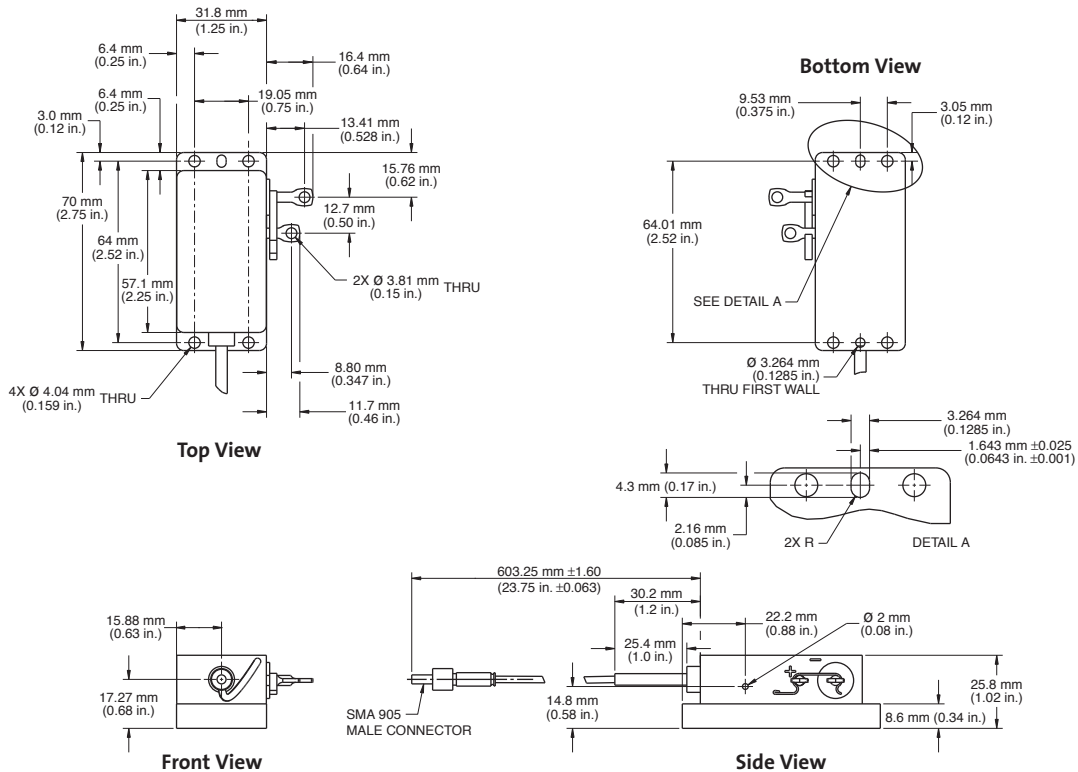
High-Brightness Fiber Array Packages



Features

- Aluminum-free Active Area (AAA™)
- High-brightness
- High efficiency
- Rugged construction
- Compact Size
- Convenient Mounting

Mechanical Specifications



Superior Reliability & Performance

FAP 400-HT Series

High-Brightness Fiber Array Packages

Device Specifications ¹ - Typical	Symbol	Spec.	880 nm 40W	808 nm 45W
			1144262	1144261
Part Number			1144262	1144261
Description/Model Number			FAP400-HT-40W-877.0 to883.0-F90E<5.0-25C	FAP400-HT-45W-805.0 to811.0-F90E<5.0-25C
Optical Characteristics	Center Wavelength ² (nm)	λ_c	typ. 880	808
	Center Wavelength Tolerance (nm)	$\Delta\lambda_c$	typ. ±3	
	Spectral Width (FW90%E)(nm)	$\Delta\lambda$	max. 5	
	Numerical Aperture ³	NA	max. 0.22	
	Fiber-Bundle Diameter (μm)	ϕ_c	typ. 400	
	Fiber Length (m)	L	typ. 3 to 5	
Electrical Characteristics	CW Output Power ⁴ (W)	P_{op}	typ. 40	45
	Threshold Current (A)	I_{th}	max. 12	11
	Operating Current (A)	I_{op}	max. 60	70
	Slope Efficiency (W/A)	$\eta_o = P_{op}/(I_{op}-I_{th})$	min. 0.8	
	Conversion Efficiency (%)	$\eta = P_{op}/(I_{op}V_{op})$	min. 38	
	Operating Voltage (V)	V_{op}	max. 2.2	
	Recommended Hookup Wire	gauge	typ. 8 or heavier	
Thermal Characteristics	Recommended Case Temp. (°C)	T_c	typ. 25	
	Operating Temperature Range (°C)	T_{op}	typ. 15 to 45	
	Storage Temperature Range (°C)	T_{st}	typ. -20 to 60	
Mechanical Specifications	Weight g (oz.)		typ. 300 (10.3)	
	Dimensions (L x W x H)		typ. 70 x 31.8 x 25.8 mm (2.76 x 1.25 x 1.02 in.)	
	Meter		FieldMaster-GS™	
	Part Number		33-0498-000	
	Sensor		LM-150FS	
	Part Number		337873-000	

¹ All values measured at case temperature (T_c) = 25°C. Other wavelengths available.

² Custom center wavelengths are available. Consult your Coherent representative.

³ The numerical aperture of the output beam is defined as the sine of the half-angle of the divergence that encircles 90% of the energy.

⁴ Minimum CW output power at I_{op} .

Coherent follows a policy of continuous product improvement. Specifications are subject to change without notice.

Coherent's scientific and industrial lasers are certified to comply with the Federal Regulations (21 CFR Subchapter J) as administered by the Center for Devices and Radiological Health on all systems ordered for shipment after August 2, 1976.

Coherent offers a limited warranty for all Fiber Array Packages. For full details of this warranty coverage, please refer to the Service section at www.Coherent.com or contact your local Sales or Service Representative.



www.Coherent.com

Coherent, Inc.
5100 Patrick Henry Drive
Santa Clara, CA 95054
phone (800) 527-3786
(408) 764-4983
fax (408) 764-4646
e-mail tech.sales@Coherent.com

Benelux +31 (30) 280 6060
China +86 (10) 6280 0209
France +33 (0)1 6985 5145
Germany +49 (6071) 968 333
Italy +39 (02) 34 530 214
Japan +81 (3) 5635 8700
Korea +82 (2) 460 7900
UK +44 (1353) 658 833