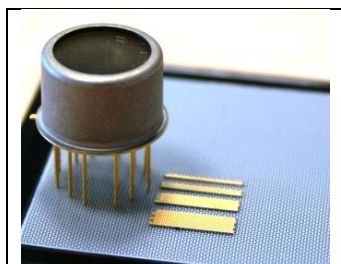


DATA SHEET: 2100 nm FABRY-PEROT LASER DIODE

Product number: FL21000079CM-W4-160mW



Specification*

T = 20 °C, Continuous-wave operation

Parameter	Unit	Min.	Typ.	Max.
Resonator length	mm		3	
Ridge width	μm		4	5
Threshold current	mA		75	
Operating current	mA	0	<1000	1000
Operating voltage @ 1 A	V		1.7	2.0
Peak output power	mW	150	160	NA
Center wavelength @ 1 A	nm	2070	2110	2115
Spectral bandwidth @ 1 A	nm		<5	
Beam shape and mode properties**				
Mode	Fast-axis	Slow-axis		Polarization
TE00	46 deg	20-24 deg		TE

* Exceeding maximum operating ratings can lead to permanent damage to the device! This can adversely affect device performance or lead to complete failure.

** Divergence angle values indicate FWHM of the full far-field divergence angle. Beam profile and M2 measurements are carried out in accordance to ISO-11146 standard.

Typical characteristics: C-mount package

Brolis semiconductors Ltd.

Moletu pl. 73,
LT-14259 Vilnius, Lithuania
Phone: +370 611 18430
Email: info@brolis-semicon.com
http://www.brolis-semicon.com

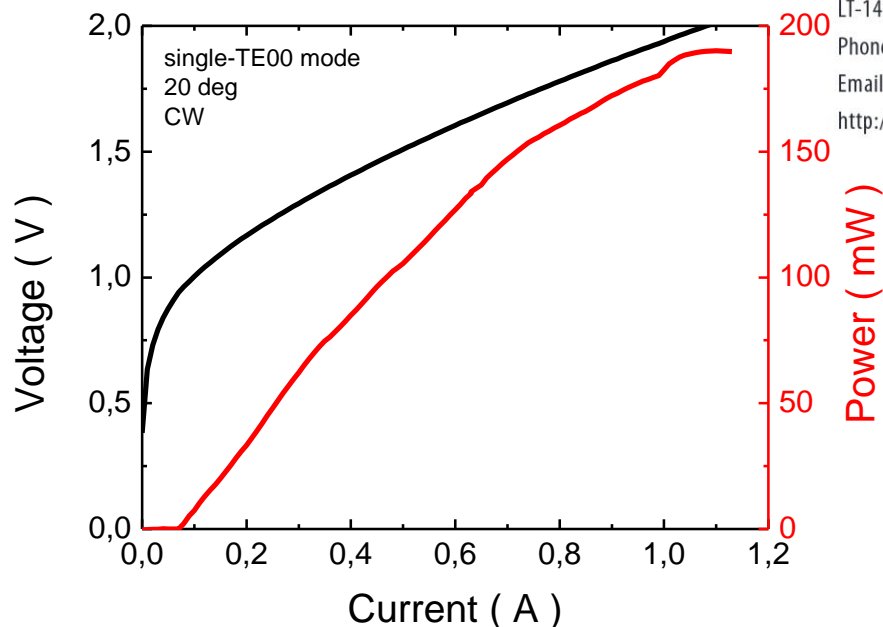


Fig. 1. Typical L-I-V characteristics for a 3 mm x 0.004 mm laser diode on a C-mount at 20 degrees C. Operation mode is CW.

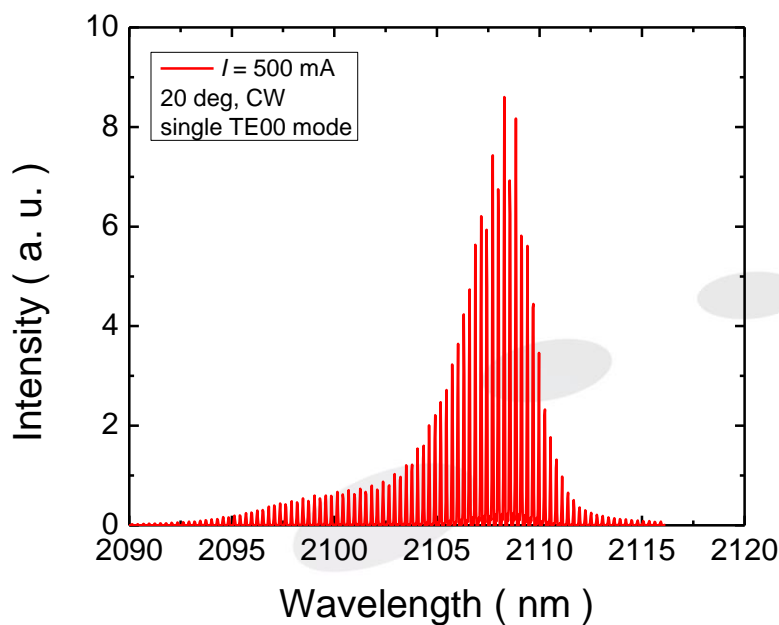


Fig. 2. Typical emission spectrum of TE00 single-spatial mode laser diode. Drive current is 500 mA. Heatsink temperature is 20 deg C.