

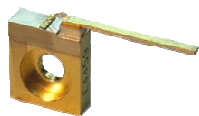
LDX Optronics Inc.

445nm -690nm Laser Diodes – Free Space

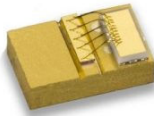
Part Number	Wavelength (nm)	Output Power (mW)	Emitter Size (um)	Operating Temp (°C)	Threshold Current (mA) Typ.	Operating Current (mA) Typ.	Operating Voltage (V) Typ.	Beam Divergence (FWHM)		Spectral Width (°) FWHM	Polarization
								$\theta_{//}$ (°)	θ_{\perp} (°)		
LDX-2106-622	622 ±3 nm	150	60	5	750	1250	2.3	7	50	1	TE
LDX-2205-627	627 ±3 nm	250	50	10	450	1000	2.3	7	50	1	TE
LDX-2310-627	627 ±3 nm	350	100	10	900	1500	2.3	7	50	1	TE
LDX-2205-630	630 ±3 nm	250	50	15	450	1000	2.1	7	34	1	TM
LDX-2410-630	630 ±3 nm	400	100	15	900	1500	2.1	7	34	1	TM
LDX-2305-635	635 ±3 nm	300	50	15	425	800	2.4	7	34	1	TM
LDX-2410-635	635 ±3 nm	400	100	20	550	850	2.1	7	34	1	TM
LDX-2615-635	635 ±3 nm	600	150	20	600	1200	2.1	7	34	1	TM
LDX-3130-635	635 ±3 nm	1,200	300	15	1200	2900	2.2	7	34	1	TM
LDX-2205-645	645 ±3 nm	250	50	20	375	600	2.1	7	34	1	TE
LDX-2410-645	645 ±3 nm	400	100	20	500	1050	2.1	7	24	1	TE
LDX-3115-650	650 ±5 nm	1,000	150	20	700	1700	2.1	7	40	1	TE
LDX-2305-660	660 ±3 nm	300	50	20	300	700	2.1	7	40	1	TE
LDX-2710-660	660 ±3 nm	700	100	20	600	1150	2.1	7	40	1	TE
LDX-3115-660	660 ±3 nm	1,000	150	20	800	1550	2.2	7	40	1	TE
LDX-3230-660	660 ±3 nm	2,000	300	20	1800	3600	2.2	7	40	1	TE
LDX-2305-665	665 ±3 nm	300	50	20	300	900	2.1	7	40	1	TE
LDX-2710-665	665 ±3 nm	700	100	20	500	1350	2.1	7	40	1	TE
LDX-3115-665	665 ±3 nm	1,000	150	20	700	1600	2.1	7	40	1	TE
LDX-3230-665	665 ±3 nm	1,600	300	20	2000	4000	2.1	7	40	1	TE
LDX-2405-680	680 ±3 nm	400	50	20	300	900	2.1	7	40	1	TE
LDX-2710-680	680 ±3 nm	750	100	20	450	1350	2.1	7	40	1	TE
LDX-3115-680	680 ±3 nm	1,000	150	20	650	1600	2.1	7	40	1	TE
LDX-3230-680	680 ±3 nm	1,800	300	20	2000	4200	2.1	7	40	1	TE
LDX-2405-690	690 ±3 nm	400	50	20	300	900	2.2	7	34	1	TE
LDX-2710-690	690 ±3 nm	750	100	20	450	1100	2.2	7	34	1	TE
LDX-3115-685	685 ±3 nm	1,000	150	20	600	1300	2.1	7	34	1	TE
LDX-3230-685	685 ±3 nm	2,000	300	20	500	2800	2.1	7	34	1	TE

Standard Free Space Package Options:

C-mount



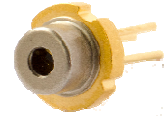
B / Q-mount



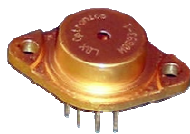
Chip on Substrate (COS)



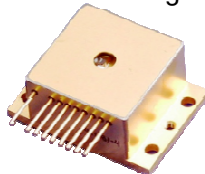
9.0mm



TO-3 Package



HHL Package



For Additional Information Contact:



203 Joseph St. O'Fallon, Mo 63366
 Phone: (636) 272-7227; fax (636) 272-3909
 diodes@rpmclasers.com rpmclasers.com

