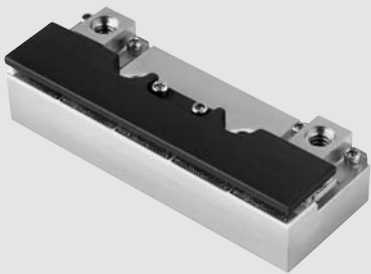


PulseLife CW Tileable Array

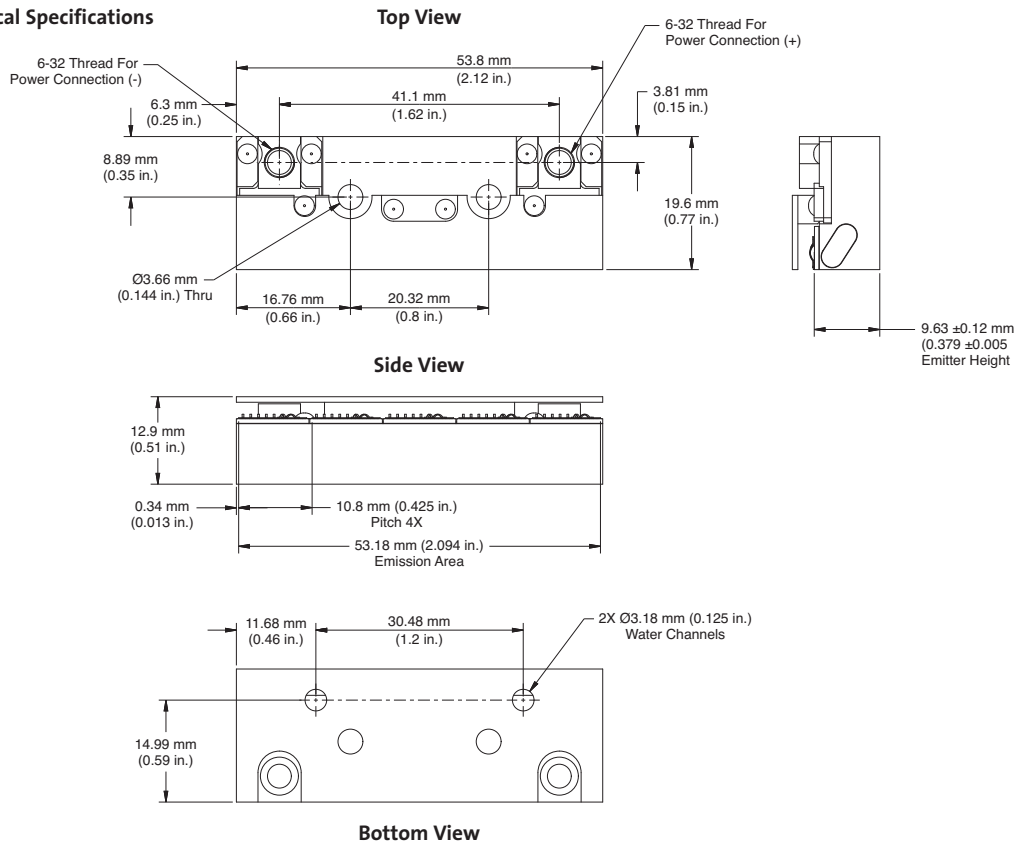
Water-Cooled Horizontal Tileable Array

Features

- Compact design for end-to-end stacking
- Hard-solder indium-free die attach
- Simple, reliable, macro-channel water cooling
- Patented industry-leading AAA™ (Aluminum-free Active Area) epi
- >20,000 hours MTTF



Mechanical Specifications



Superior Reliability & Performance

PulseLife™ CW Tileable Array

Water-Cooled Horizontal Tileable Array

Device Specifications

	5-Bar Arrays
CW Output Power, Total (W)	200
CW Output Power per Bar (W)	40
Center Wavelength ¹ (nm)	807 ±2
Wavelength Temperature Coefficient (nm/C)	0.28
Spectral Width ² (FWHM)(nm)	<3
Fast Axis Divergence (FWHM)(deg.)	<35
Slow Axis Divergence (FWHM)(deg.)	<10
Operating Current (A)	<51 (45 typ.)
Operating Voltage (V)	<10.6 (10 typ.)
Threshold Current (A)	12 (typ.)
Recommended Operating Temp. ³ (°C)	25
Recommended Operating Temp. Range ⁴ (°C)	15 to 35
Storage Temperature Range ⁴ (°C)	-40 to +70
Water Flow Rate ⁵ (l/min.)	>1.5
Water Pressure Drop ⁶ (psi)	<30
Water Filter Size (µm)	≤100
Water Quality	Distilled or clean tap water
Intended Operation Mode	CW or QCW

Absolute Maximum Ratings

Reverse Current (µA)	25
Reverse Voltage (V)	2
Internal Water Pressure (psi)	60

¹ At rated power and operating temperature, with water flow 1.5 lpm per array.

² At rated power and operating temperature.

³ Water inlet temperature.

⁴ In clean dry air; non-condensing environment.

⁵ Water flow rate should be maintained at 1.5 lpm or above.

⁶ Water pressure drop given above is required to maintain water flow rate of 1.5 lpm.

Coherent follows a policy of continuous product improvement. Specifications are subject to change without notice.

Coherent's scientific and industrial lasers are certified to comply with the Federal Regulations (21 CFR Subchapter J) as administered by the Center for Devices and Radiological Health on all systems ordered for shipment after August 2, 1976.

Coherent offers a limited warranty for all PulseLife arrays. For full details of this warranty coverage, please refer to the Service section at www.Coherent.com or contact your local Sales or Service Representative.



www.Coherent.com

Coherent, Inc.
 5100 Patrick Henry Drive
 Santa Clara, CA 95054
 phone (800) 527-3786
 (408) 764-4983
 fax (408) 764-4646
 e-mail tech.sales@Coherent.com

Benelux +31 (30) 280 6060
 China +86 (10) 6280 0209
 France +33 (0)1 6985 5145
 Germany +49 (6071) 968 333
 Italy +39 (02) 34 530 214
 Japan +81 (3) 5635 8700
 Korea +82 (2) 460 7900
 UK +44 (1353) 658 833