

*This product is sold  
and supported  
in the USA by*



**LASER LAB SOURCE**  
marketplace for **Scientists & Engineers**

**Laser Diode Part Number: 1310LD-3-0-0**

---

---

**contact@laserlabsource.com | 800-887-5065**

## 1310 nm laser diode - DFB

Model 3 : >100 mW / singlemode fiber / 14 pin Butterfly package

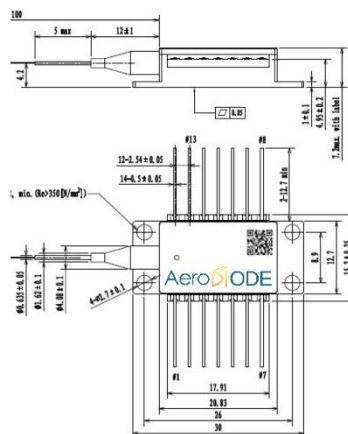
Reference: 1310LD-3-0-0-0/1

Technology : DFB\*

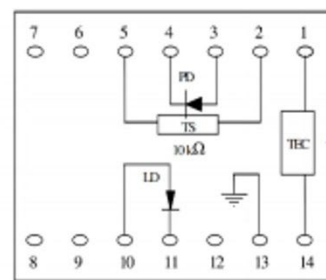
SPECIFICATIONS	Unit	Min	Typ	Maximum
Output Power (CW mode)	mW	100		
Output Power (Pulse mode)	mW		>150	
Center Wavelength (CW)	nm	1305	1310	1315
Spectral Width (FWHM)	kHz		200	
Threshold Current	mA		15	30
Operating Current	mA		325	500
Operation Voltage	V		1.6	1.8
Wavelength shift w Temperature	nm/°C		0.08	
Wavelength shift w Current	nm/mA		0.003	
Side mode suppression ratio	dB	35	50	
Internal Photodiode Responsivity	mA/W	5		
Internal Photodiode Dark Current	nA			500
TEC current (-5/60°C)	A			1
TEC Voltage (-5/60°C)	V			1.5
Internal thermistor (25°C)	kOhm	9.5	10	10.5
Fiber type	SMF28-e/ultra or equivalent (PM version : PM1300 or eq.)			
Coating diameter	μm		900	
Fiber bend radius	mm	30		
Storage case temperature	°C	-40		70
Case operating temperature	°C	-20		60
Lead soldering temperature	°C		260	300
Laser diode reverse voltage	V			15
Pigtail termination	FC/APC connector			
Polarization state (PM version)	Aligned to the slow axis			

\*: See our tutorial : [fiber coupled laser diode](#)

Form factor & Laser diode pinning (standard 14-pin Butterfly Type-1) :



Dimensions are in mm



Totally floating pin-out

